



## Central Union of Agricultural Producers and Forest Owners (MTK)

# MTK - the Central Union of Agricultural Producers and Forest Owners



It...

- supervises the interests of farmers, forest owners and rural entrepreneurs;
- represents its members and related industries that use renewable natural resources in a sustainable way





- MTK monitors the agricultural policy of the EU and turns the needs and wishes of its members into proposals
- The interests are managed at the national level
  - Markets for farm production
  - Environmental and agricultural policy
  - Forestry issues
  - Taxation
  - Financing
  - Social policy
  - Regional policy
  - Food security management



**FARMERS**

**RURAL  
ENTREPRENEURS**

**FOREST  
OWNERS**

**331 000 members**

Local Farmers Associations  
(359)

Forest management  
associations (FMA) (75)

REGIONAL FARMERS  
UNIONS (14)

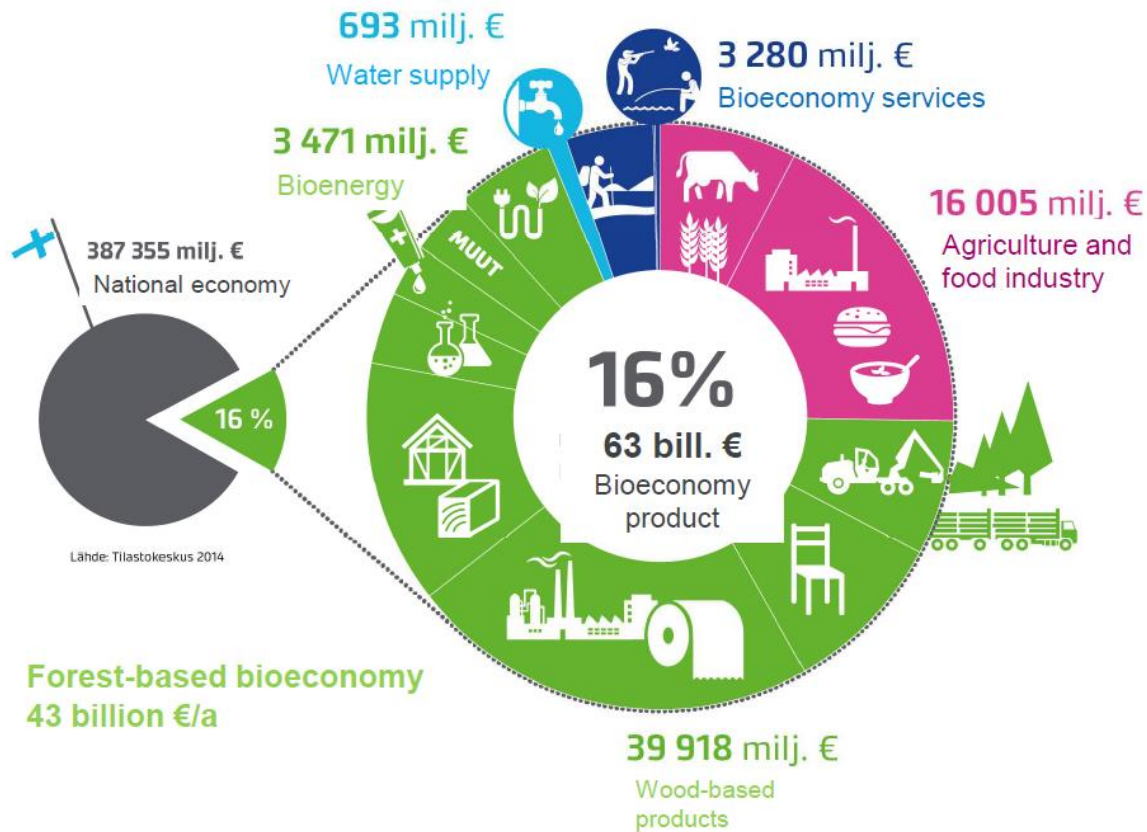
PROAGRIA ADVISORY  
CENTRES

FUR BREEDERS'  
ASSOCIATION

JOINT FOREST  
ASSOCIATION

**THE OFFICE OF THE CENTRAL UNION OF AGRICULTURAL  
PRODUCERS AND FOREST OWNERS**  
Maaseudun Tulevaisuus (Newspaper)

# Bioeconomy 16% of GDP



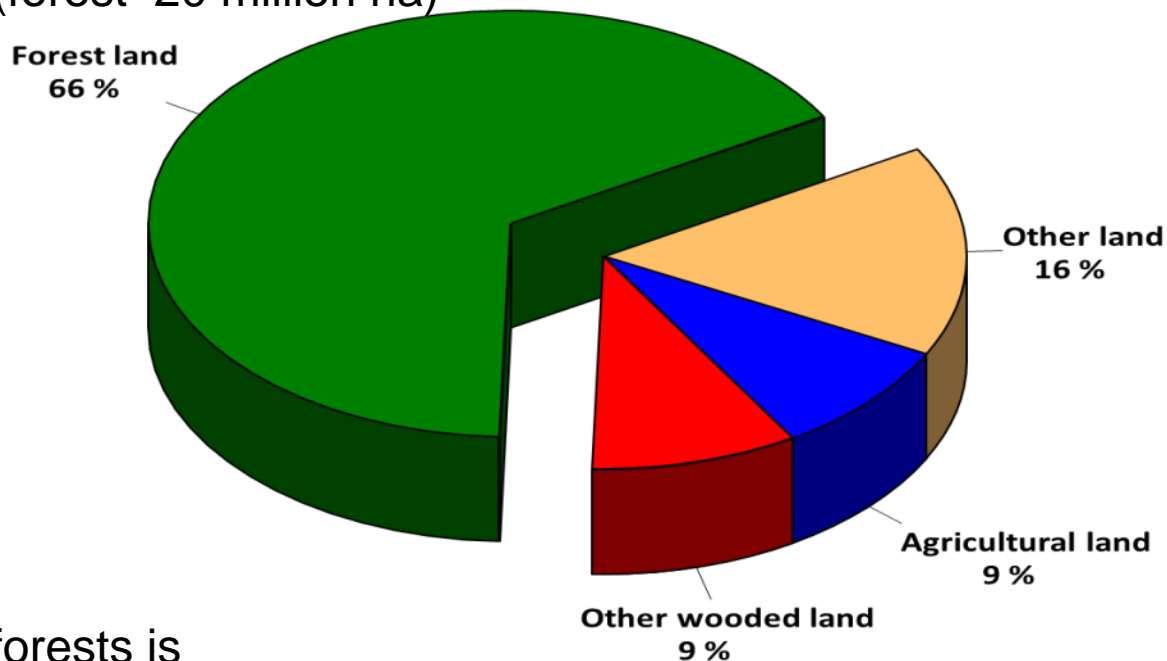


# Land Use in Finland

Total land area 30 million ha (forest 20 million ha)



The area of Finnish forests is about the same size as Great Britain





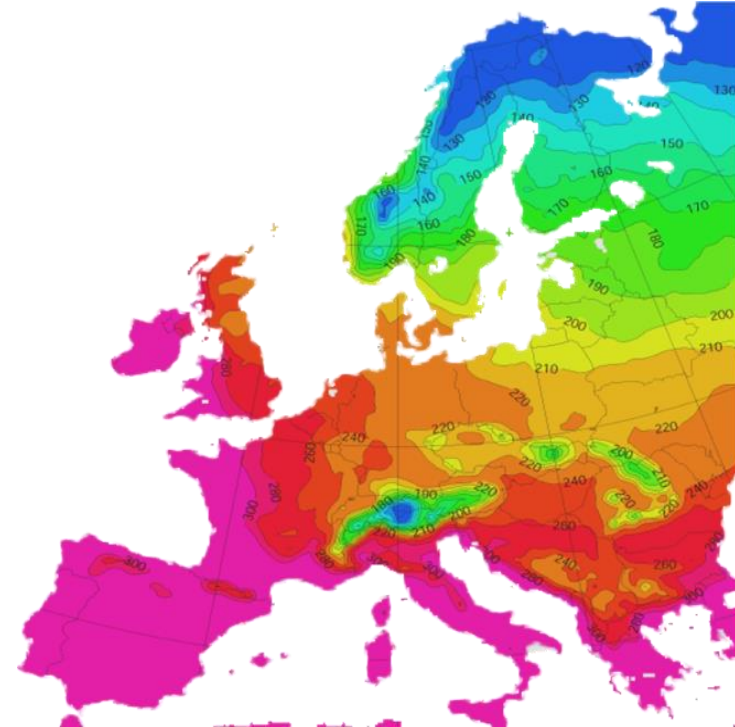
# Arctic agriculture



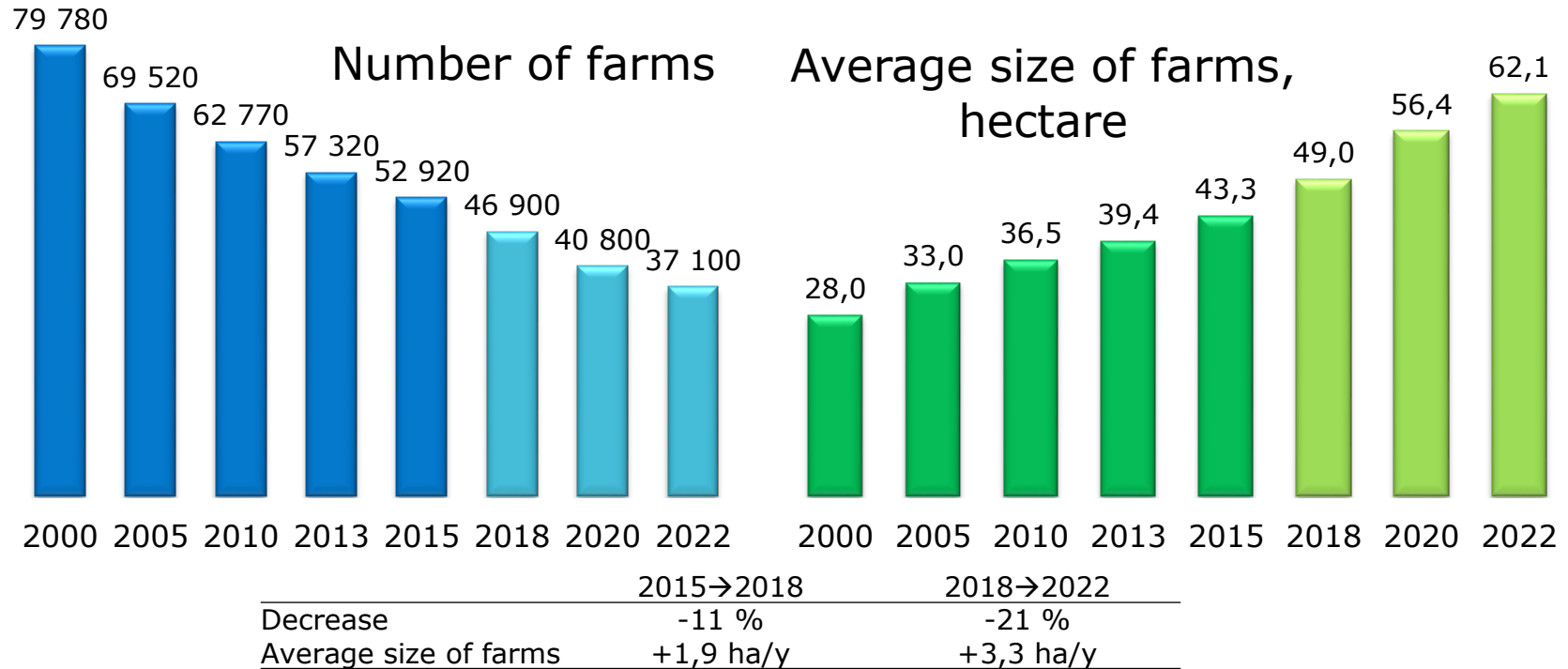
# Finland – World's northernmost agricultural country

Geographical location is the greatest disadvantage:

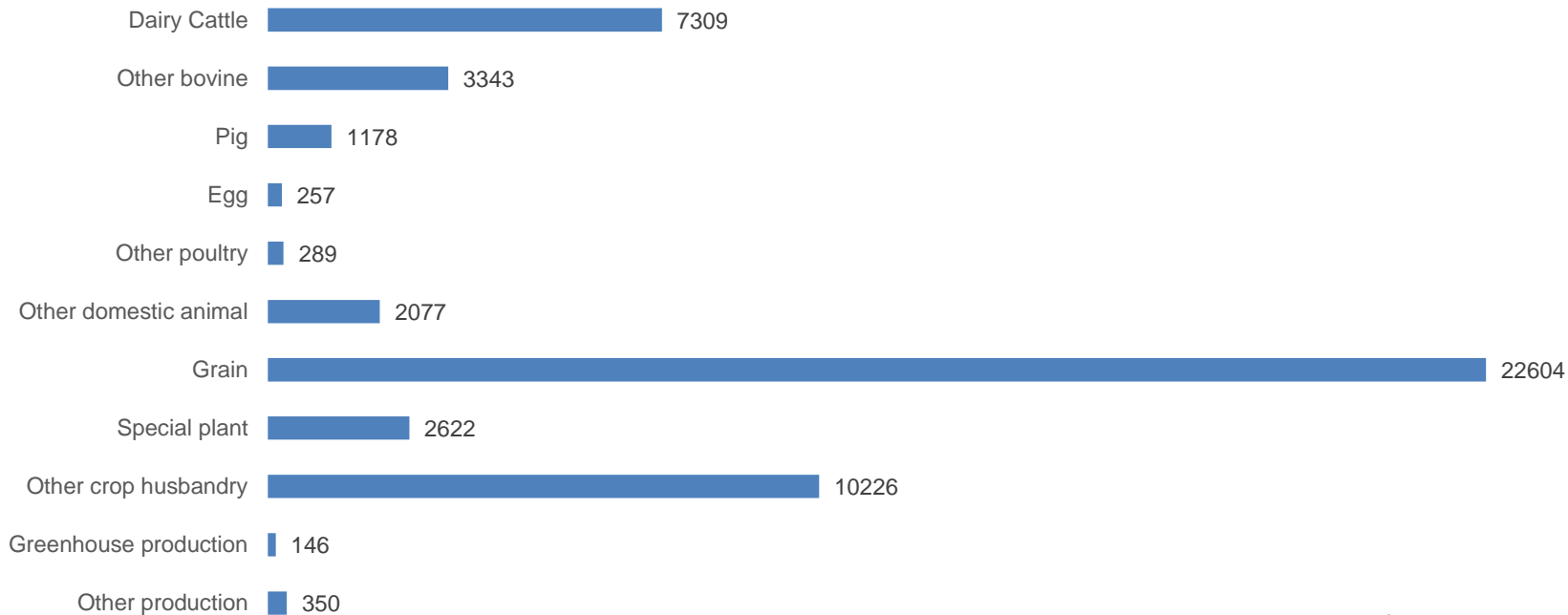
- A short growing season of 120 - 180 days
- Natural conditions limit yield levels and the number of plants that can be cultivated







# Number of farms in Finland

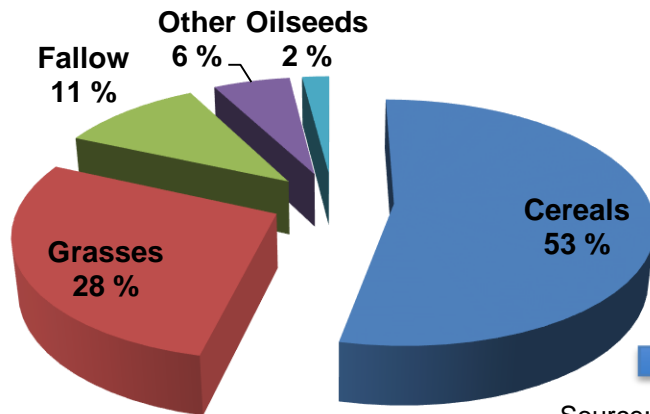


Total 50401 farms

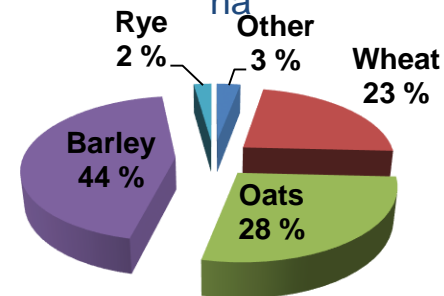
# Use of agricultural land 2014



Cultivated land 2.3 million ha

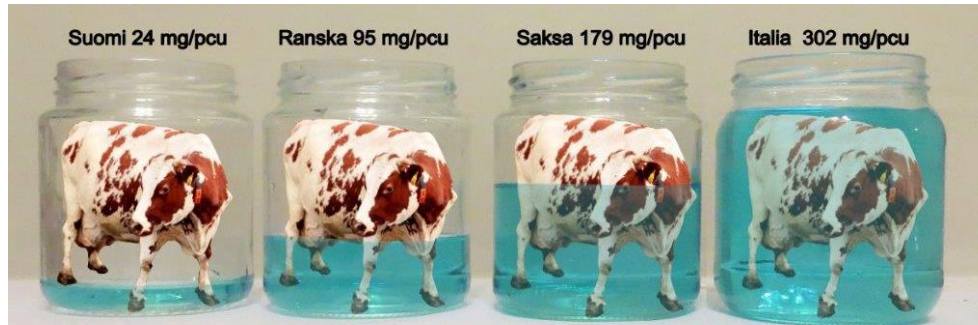


Cereal area 1.2 million ha



Source: Information Centre of the Ministry of Agriculture and Forestry

# Agriculture in Finland:





## Cycles of elements

## Sustainable agriculture

### Stands on the 3 pillars

1. Economical
2. Social
3. Environmental

### on productive soils

as a part of

- biodiverse ecosystems
- cycles of elements

Biodiversity in nature

# BASES FOR CAP 2027

Strong and simple policy with a solid budget and a two-pillar structure



Improving farmers position in the food chain



Maintaining production and food security in the whole of EU



Ensuring investments and improving conditions for young farmers





Bioproduction mill Äänekoski



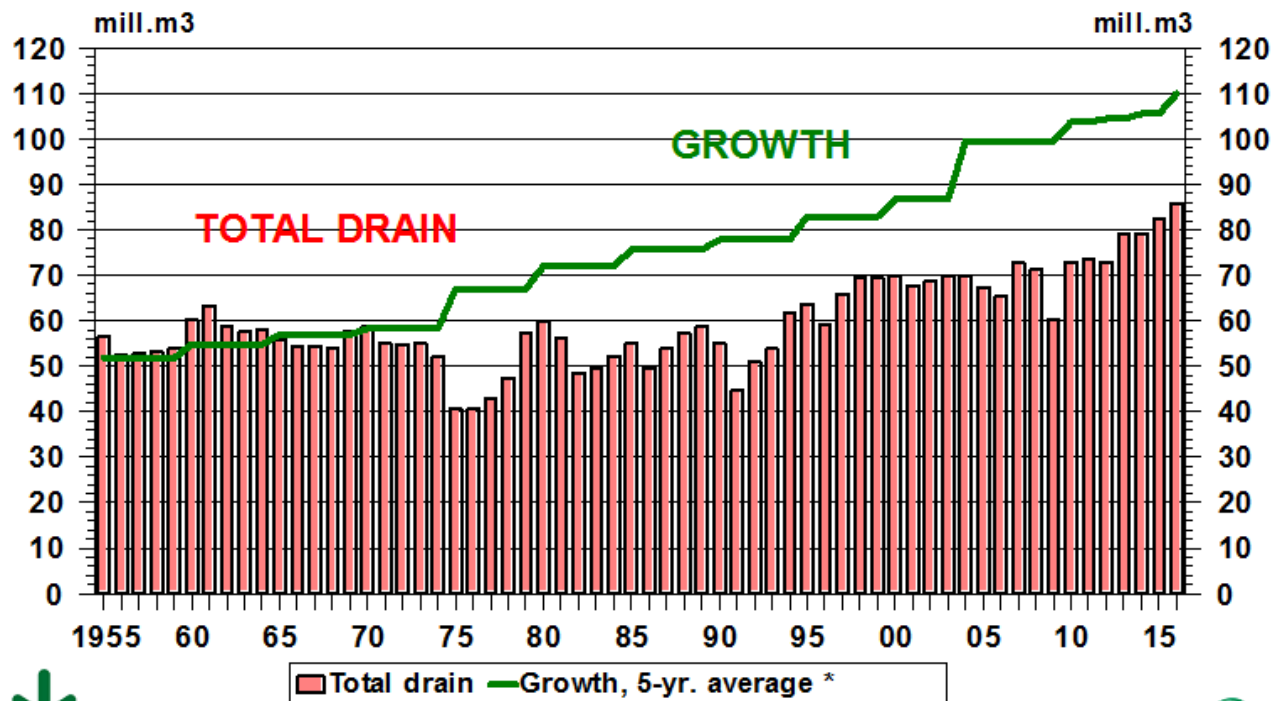
# Forestry - Growth and Investments



Timber school campus Pudasjärvi



# TIMBER BALANCE IN FINLAND



Source: Natural Resources Institute Finland

\* Growth incl. industrial roundwood (logs and pulpwood). In addition, annual harvesting potential of energy wood (i.e. logging residues and stumps) is 10-15 mill. m3.



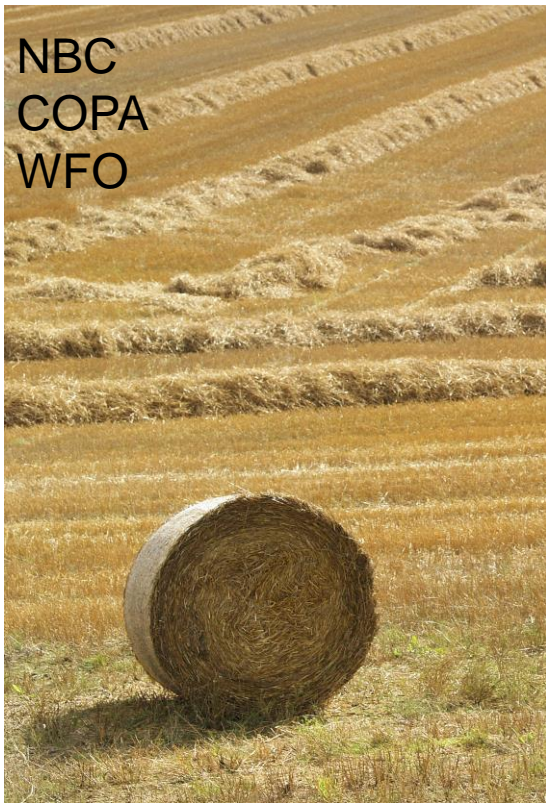


[Watch the video We Put Carbon Circulating by Producing Food](#)



# International cooperation

NBC  
COPA  
WFO



NSF  
CEPF  
IFFA



EU Trade Policy  
WTO







## Finnish Agri-Agency for Food and Forest Development (FFD)



- NGO, agri-agency, founded in 2012 by Finnish producer organizations MTK, SLC, Pellervo and ProAgria
- Supporting agriculture and forest producers in developing countries
- Core of work is in project support
  - Supporting the organizing, networking and lobbying capacity of agriculture and forest producers' organizations
  - Reducing poverty by improving rural livelihoods and incomes
- Donors include Finland, DGIS (NL), AFD (FR), DGD (BE), EU with IFAD's technical support (Africa and ASEAN)