

Faba – cattle breeders coop

Hannu Myllymäki

Faba coop



Brief history of Faba

- First herdbook was founded in 1898
 - Maintains all bovine herdbooks
- In 1969 regional and specialized breeding organizations formed Finnish Animal Breeding Association
 - Later Faba Breeding
- Several regional artificial insemination centers were formed in 1940s
- In 2009 Faba Breeding joins FABA (all AI-organizations have been formed into one)
- In 2010 Faba starts as a co-owner in VikingGenetics with Växa (Sweden) and VikingDenmark (Denmark)







Faba

- Faba is a service and sales company owned by Finnish livestock farmers
- We have an extensive service range in livestock development, reproduction and health, as well as production services and related supply trade.
- Board of Directors: **6 farmer members**
- Board of Representatives: 36 members (4 years)
 - Next election is in November 2019



Faba provides you everyday convenience in animal material development, reproduction and health.


Genomic tested animals (dairy)/ Project for beef breeds has started

23 500

GENOMITESTATTUA ELÄINTÄ

Inseminations / pure bred beef AI n.2500

407 000 

SIEMENNYKSIÄ

 **48 000**

RAKENNEARVOSTELUA

Conformation scoring/Beef breeds about 2000

Pregnancy tests

 **190 000**

TIINEYSTARKASTUSTA

7600  Farmer members

JÄSENTÄ

 **JALOSTUS-SUUNNITELMIA**

3300

Breeding plans/now also for beef herds

HENKILÖSTÖÄ

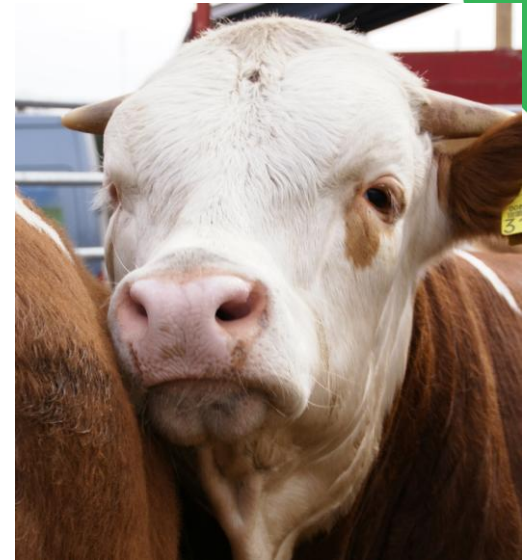
350  staff





Services to better animal quality

- Reproduction services
 - Insemination and embryo transfer
 - Semen and embryo sales
- Beef recording (ICAR)
- Herdbooking (dairy & beef breeds)
- Breeding values
 - Dairy (NTM/NAV)
 - Beef
 - Beef x Dairy (NTM/NAV)
- Mating and breeding plan
- Conformation scoring
- Genomic testing and DNA testing
 - Dairybreeds (Ayrshire/RDC, Holstein, Jersey)
 - Project has just started for beef breeds (Ab, Li, Hf, Ch, Si)



Faba's co-operation partners



- Mtech Digital Solutions Oy is a provider of agricultural software and solutions.
- Faba co-op owns 45% of Mtech.



- VikingGenetics is one of the world's largest and leading breeding companies.
- Faba co-op owns 25% of VikingGenetics.



- Nordic Cattle Genetic Evaluations (NAV) carries out joint breeding value evaluations for dairy cattle and for beef bulls that are used for dairy crossbreeding
- Faba co-op owns 25% of NAV.

ProEventus Oy

- ProEventus Oy is a financial management expert and service company.
- Faba owns 48.5% of the company.

emovet

- Emovet provides health care services for bovine animals.
- Faba owns 70% of Emovet.



NTM - Nordic Total Merit (Total merit index)



- The most complete index in the world
- Combining 90 sub-indices into 14 main traits
- All traits in NTM are economically important
- Weights in NTM are scientifically based
- Direct selection for clinical mastitis and other health traits based on veterinary registrations
- Unique index for hoof health
- Functional conformation that works for milk production
- Dairy cows and bulls are compared to each others by NTM in Denmark, Finland and Sweden



Economic value of NTM



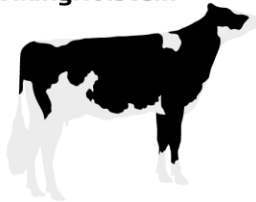
- For two Holstein heifers with a difference of 10 NTM units the superior heifer is expected to have an extra profit of 250 € during its lifetime.



VikingGenetics embryo and female programme (genomic selection)



VikingHolstein

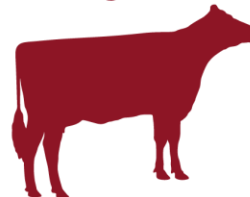


15,000
genomic test
of females

450
Heifers contracted
for flushing

4300
Embryos per
year

VikingRed

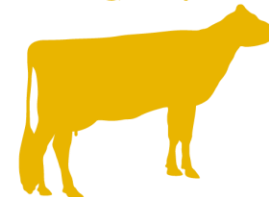


12,000
genomic test
of females

220
Heifers contracted
for flushing

3500
Embryos per year

VikingJersey



9,000
genomic test
of females

50
Heifers contracted
for flushing

1200
Embryos per
year

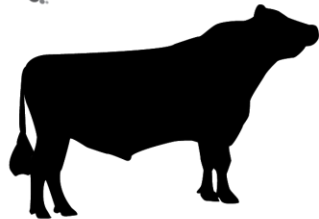


Updated 2019-02-07

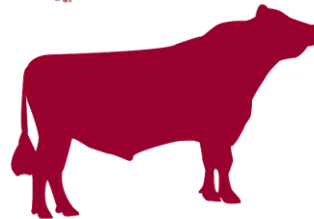
VikingGenetics breeding programme (genomic selection)



 VIKINGHOLSTEIN'



 VIKINGRED'



 VIKINGJERSEY'



High Index animals screened and bred to sire of sons.
Screening of pregnancies to ensure most interesting newborn bulls are kept alive for test

3.000 bulls
Genomically
tested

**100
bulls**

bought
90 bulls
in production

2.800 bulls
Genomically
tested

**100
bulls**

bought
80 bulls
in production

500 bulls
Genomically
tested

45 bulls
bought

35 bulls
in production

Milk recording in Finland 2018 (ProAgria)

	Cows	ECM kg	Fat	Protein
Ayrshire	90 048	9 963	4,46 %	3,58 %
Holstein	92 171	10 669	4,16 %	3,47 %
Finncattle	1 876	6 763	4,43 %	3,43 %
Jersey	874	9 370	5,21%	3,85 %



- VikingRed is a breeding program
- The breeds are:
 - Finnish Ayrshire
 - Swedish Red
 - Danish Red
- The strongest red program in the world
- 204,100 registered cows
- 2,800 genomically tested bulls annually
- 80 bulls progeny tested annually
- Low level of inbreeding compared to other breeds





-  Holstein is the largest breed in VikingGenetics
-  581,300 registered cows
-  3,000 bulls genomically tested annually
-  100 bulls progeny tested every year
-  World leader Holstein population for health traits



Genomic test of females



- GenVik is a genomic test of heifers and cows in the Nordic system with information on all traits included in NTM
- Available for testing heifers and cows:
 - Red dairy cattle
 - Holstein
 - Jersey
- GenVik helps identify the animals with the highest genetic potential and deliver the greatest improvement in next generation in the herd.

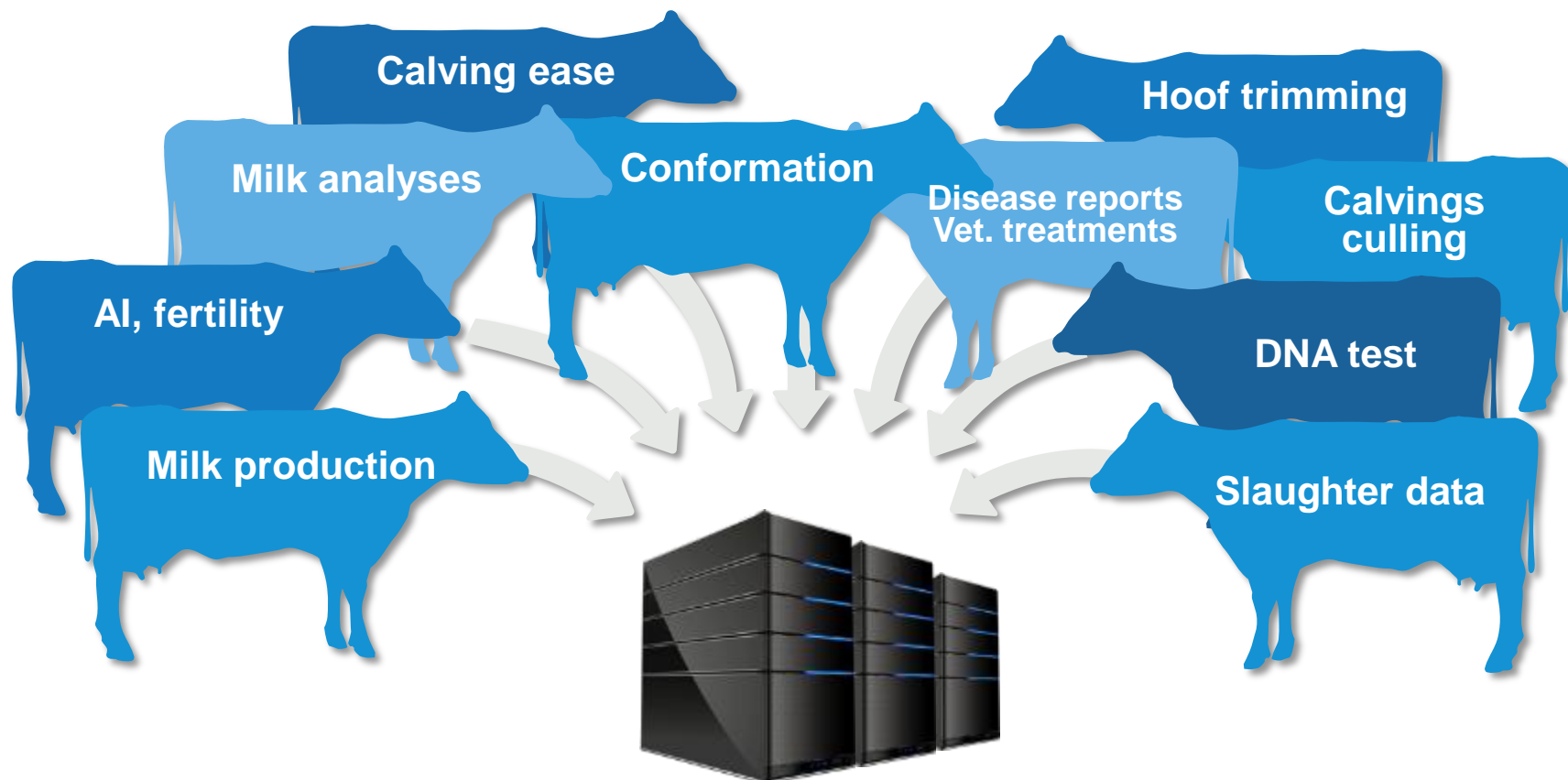


VikingGenetics is responsible for



- Breeding programs
- R&D
- Semen production
- Semen export and import
- Nucleus herd, embryo production

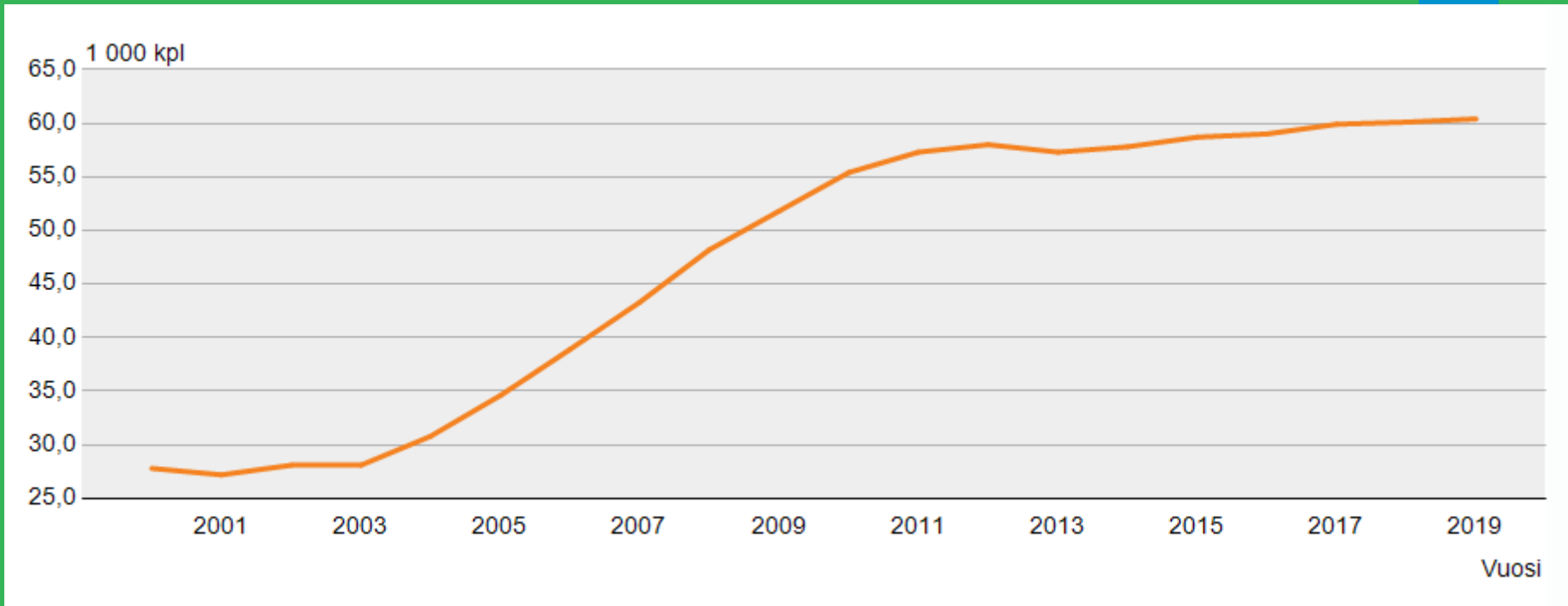
The unique Nordic cow database gives you the most reliable breeding values!



Beef cattle recording in Finland

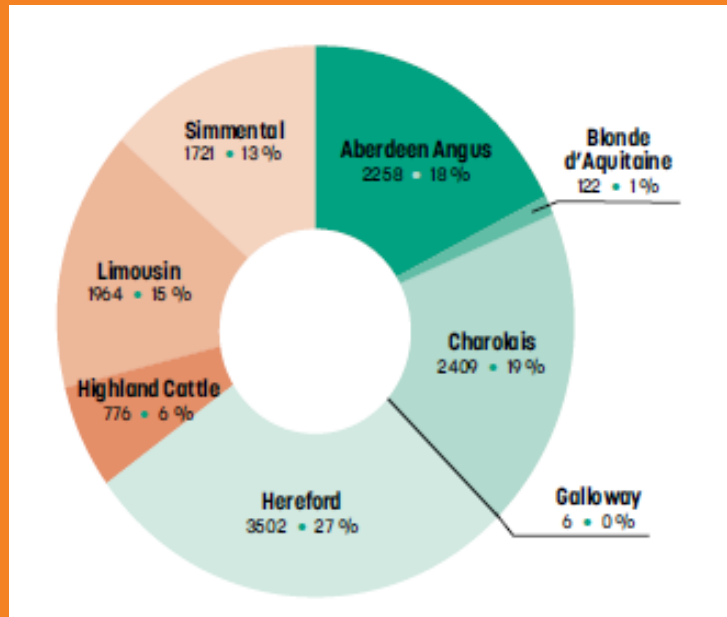


Number of suckler cows in Finland



Beef Cattle Recording in Finland

- Faba maintains beef cattle recording
- 320 farms belong to the beef cattle recording
- About 13 000 beef cows



Most popular breeds

1. Hereford
2. Charolais
3. Aberdeen Angus

Evaluation of breeding values

**By Animal
model BLUP
Multitrait model**

For 6 breeds:

Aberdeen angus
Hereford
Charolais
Limousin
Simmental
Highland cattle

**Weights and maternal
traits:**

Birth weight index
200-day weight index
365-day weight index
Maternal trait index

Slaughter traits:

Carcass weight index
Conformation index
Fat class index

Calving ease:

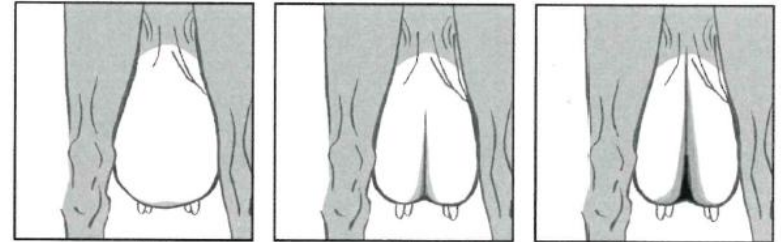
Paternal calving ease
Maternal calving ease

Scoring of dairy and beef cattle

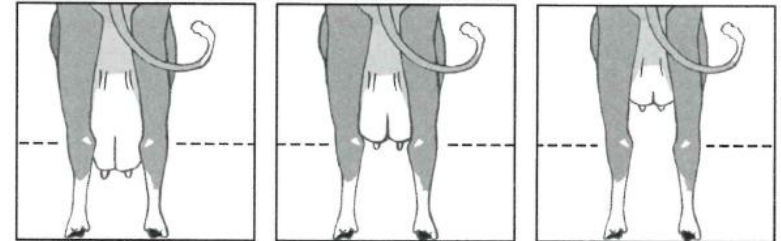
- Faba's breeding advisors are scoring the animals
- Scoring is included to the herdbook



Поддерживающая связка – глубина борозды в середине задних сосков



Высота дна вымени – расположение самой нижней точки дна вымени в отношении уровня скакательного сустава. 3=на том же уровне, 3 см/балл



Faba's export activities

- Dairy and beef purebred heifers with **top pedigree**
 - Limited amount of animals for export
 - Dairy heifers or calves
 - with high NTM
 - possibility to make a genomic test
 - Herdbooked breeding heifers or beef bulls
- A wide range of **consulting services and post-sales support:**
 - mating planning and semen recommendations to sold heifers
 - herd fertility improvement consulting
 - embryo transfer trainings
 - conformation scoring and linear type assessment courses
 - hoof health consulting



Faba has exported animals (Ayrshire, Holstein and beef breeds)

- Lithuania
- Estonia
- Poland
- Hungary
- Romania
- Sweden
- Russia (best year over 800 Ay –heifers)



Thank you!

