

## DENMARK – WATERDRIVE WP2

### Main results of the focus groups in case area ID15-opland 42320719 – Holmstrup, Fyn.

Summary (short description)

1. Workshop with landowners, farmers union, the catchment officer and SEGES. Explanation of the goals and tasks in Waterdrive.
2. Short about drainage measures and wetlands. Conversation about the catchment area and drawing of main drain pipes on a large map prepared in the program [SCALGO](#). SCALGO can show flow paths on the ground surface and identify potential sites for drainage measures (end of pipe solutions). A very fast way to work.
3. Farmers have shown interest in several possible theoretical SCALGO locations for constructed wetlands. Only farm visits and slopes in terrain can decide what is possible.
4. Agreements - visits at farm level with landowners before next workshop.
5. Cooperation and field visits with Odense Municipality as a next step.

We are in a good progress with several farm visits in June and need now to involve Odense Municipality more in Waterdrive and the case areas.



Drawing of main tiles/pipes in the local ID 15 catchment. Photo Frank Bondgaard



The first step – finding the main tiles/pipes (black). Photo Frank Bondgaard

### **Main tasks/goals of the focus groups**

The main task as a first step in the focus group is discussion of and implementation of constructed wetlands, constructed wetlands with woodchips, wetlands and forest. Waterdrive will also try to look at the possibility of implementing new drainage measures as intelligent bufferzones, saturated bufferzones ect. (end of pipe solutions). The measures Waterdrive is working with are shown in the participatory toolbox [here](#).

From 1990 until today nitrogen emission to the sea has been reduced by approx. 50 percent. In addition to the reduced use of fertilizers other measures also play an important role such as rules for cultivation practices (winter green fields, catch crops, storage of manure and time of application, utilization rate of livestock manure etc.). The Danish farmers send each year fertilizer plans and fertilizer accounts to the state.

Based on the progress the last 20-30 years Waterdrive only will focus on cooperation, involvement and implementation of drainage measures, wetlands and forest in the landscape.

## Strategic planning of focus groups (what to do when and how?)

### Focus group meeting 1

Minutes/resume of meeting

- The main purpose of the meeting

Focus group meeting 1 in the catchment area ID15-opland 42320719 – around Holmstrup, Fyn.

Agenda 21. May 2019. Kick off meeting with landowners:

1. Welcome and purpose of the meeting. *By Torben Povlsen, chairman of Centrovic & the farmers union.*
2. Individual and collective measures Agricultural Package. *By Michael Wang Lønbæk, crop protection consultant & Anne Sloth local Catchment Officer Centrovic.*
3. Briefly about drainage measures. *By Simon Rosendahl BJORHOLM, special consultant SEGES of construct-ed wetlands, intelligent buffer zones etc.*
4. Joint discussion - how can the challenges be solved in ID 42320719? *By v. Anne Sloth, onshore consultant & Frank Bondgaard, senior consultant, SEGES*

The goal of the 1. meeting

Centrovic & Waterdrive/SEGES would like to kick off a general level in cooperation with landowners and prepare a plan for drainage measures, wetlands and forest in the catchment area ID 42320719. The plan should be prepared by local involvement. The landowners attitude to implementing new drainage measures is being verified at a practical level. It should be emphasized that the individual is not obliged to carry out the projects we are talking about.

- Participants (at least the stakeholder categories)

Farmers Union, local agricultural advisor, catchment officer, agricultural specialists from SEGES and an anthropologist.

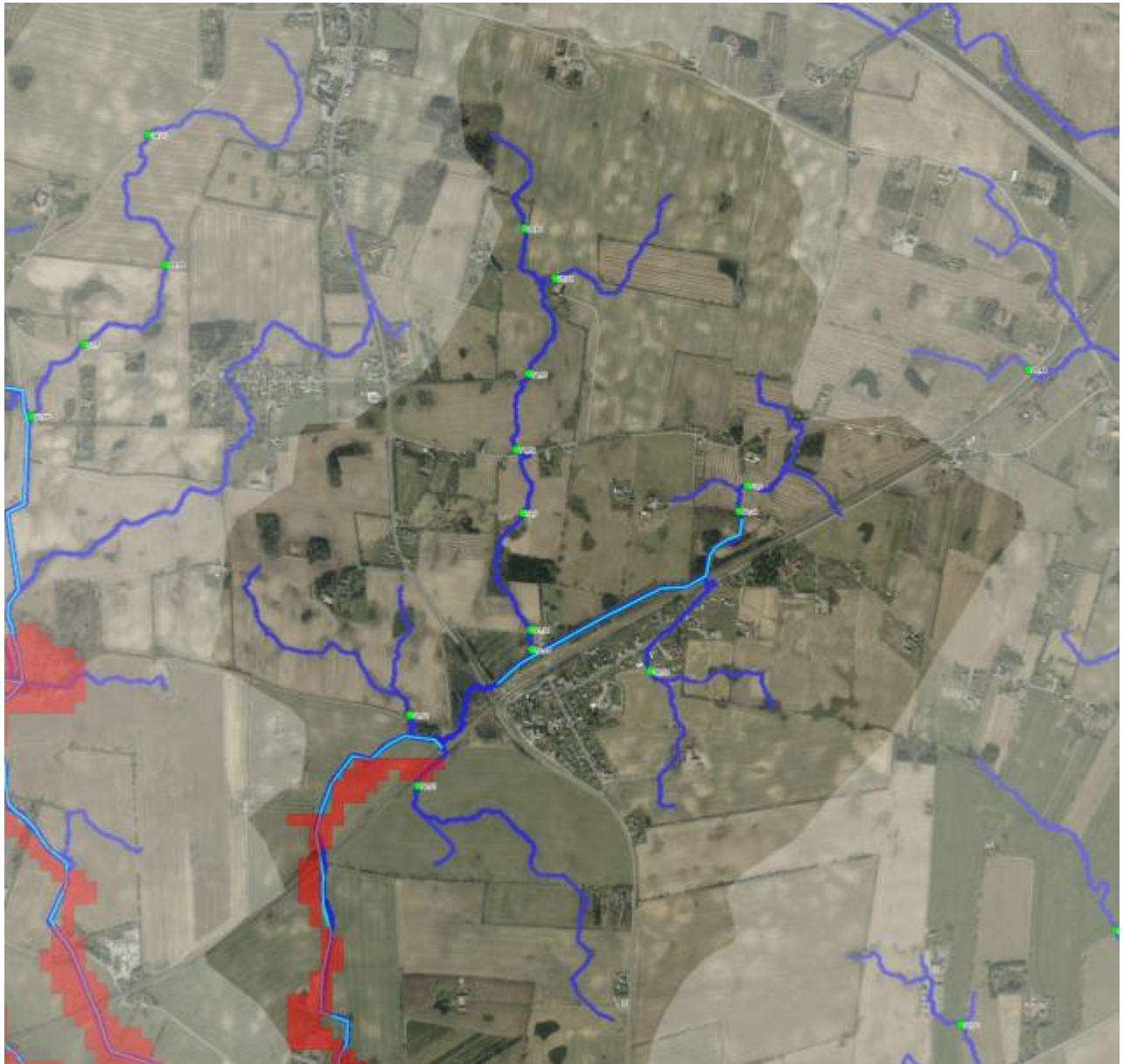
- Main inputs made for the future work in the case area (minutes and resume of meeting)

It was important to have the landowners' acceptance of participation in the project Waterdrive, so therefore Odense municipality was not involved at the first meeting.

In future start-up meetings, it will be an strong advantage if the municipality and the catchment officer held a technical meeting on the real opportunities in the local catchment area. This will prevent misunderstandings and the catchment officer can be clearer with the real opportunities for the landowners.

- What we learned from the focus groups meeting
  - What worked great?

To look at large maps (SCALGO+GIS) with flow directions (blue line) with potential locations (green dots) for drainage measures. Often will the flow directions show where the main tiles are running in the landscape, but not always. A combination of the landowners knowledge and the SCALGO maps is a great help for the catchment officers. The map helps the catchment officers to find the right farmers to visit very fast.



(SCALGO+GIS) with flow directions (blue line) and potential locations (green dots) for drainage measures.

- What might be improved at the next meeting (content, format, facilitation, etc)?

We need a closer cooperation with the municipality because they have the lead of implementation of wetlands.

We must move quickly to what the workshop really is about. If you want the landowners to talk don't use so much of the time on Power Points.

- Special needs?
  
- Possible actions and improvements before and during next meeting

Next step is individual meetings with landowners at farm level and bring Odense municipality into project Waterdrive project. The farm visits will form the basis for the next workshop.

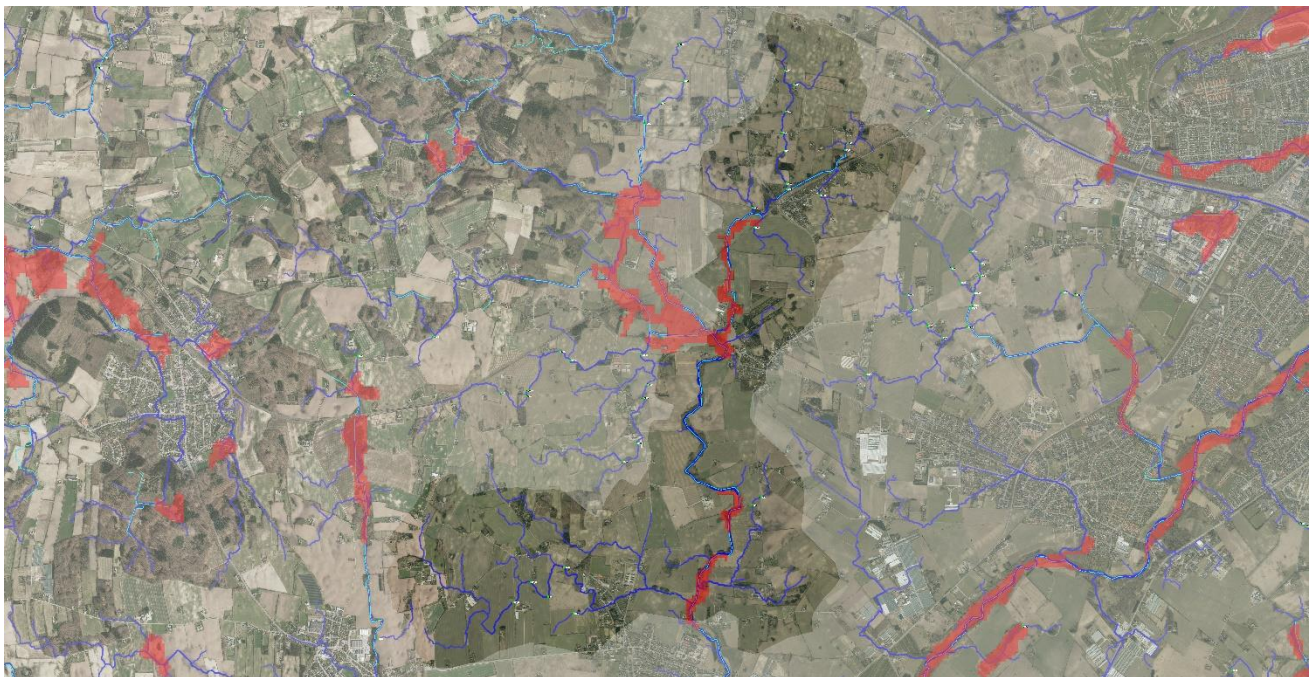
### **Results (actions, measures, ideas, products, etc)**

The Waterdrive workshop showed several possibilities for constructed wetland and the farmers are interest to have field visits.

We have to expand the case area with one more ID 15 catchment area because there will be a lot of forest in the Holmstrup catchment area for drinking water protection.

### **Conclusions**

We are in a good progress with several farm visits in June and need now to involve Odense Municipality more in Waterdrive and the case areas.



ID15-opleveland 42320719 – Holmstrup, Fyn