



EUROPEAN UNION

EUROPEAN  
REGIONAL  
DEVELOPMENT  
FUND



WITH FINANCIAL  
SUPPORT OF THE  
RUSSIAN  
FEDERATION



# Multi-actor cooperation in multifunctional projects

Mads Lægdsgaard Madsen  
SEGES

19 october 2021

## Why „Multi-actor cooperation in multifunctional projects“?

- 61% arable land
- vulnerable fjords
- relatively high level of monitoring of environmental impact

Further demands for reduction of water environmental impact in relation to farming.

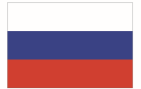
General regulation vs. local solutions

## We need to integrate local knowledge!

# World upside down



EUROPEAN UNION  
EUROPEAN  
REGIONAL  
DEVELOPMENT  
FUND



WITH FINANCIAL  
SUPPORT OF THE  
RUSSIAN  
FEDERATION

Human beings make decisions - afterwards we might find a cause to the decision.

A: to see people as rational entities

B: to meet people as social entities

A: Information and scientific knowledge => rational decision

B: Acknowledgement from friends motivates for action

A: We introduce farmers for ready-made solutions => farmers say YES! (?)

B: We and farmers combine knowledge in a collective acknowledging process => we all motivate each other.

# Different sorts of knowledge



EUROPEAN UNION  
EUROPEAN  
REGIONAL  
DEVELOPMENT  
FUND



WITH FINANCIAL  
SUPPORT OF THE  
RUSSIAN  
FEDERATION

- Environmental – technical knowledge
- Farm technical/economic knowledge
- Historical knowledge
- ....

WHEN

farmers contribute with their knowledge in a communitive

AND

the knowledge is integrated in the development of solutions,

THEN

a strong collective commitment can be created

# Collective startup-meetings

All farmers (5-15) in small catchment areas invited to discuss possibilities for implementation of water environmental solutions.

## Agenda:

1. Welcome by local Farmers Union Pres.
2. Information on possible solutions
3. Map on the table, drain-pipe knowledge, solutions
4. Deciding which solutions to be chosen and where





# Solutions - examples



EUROPEAN UNION  
EUROPEAN  
REGIONAL  
DEVELOPMENT  
FUND

WITH FINANCIAL  
SUPPORT OF THE  
RUSSIAN  
FEDERATION

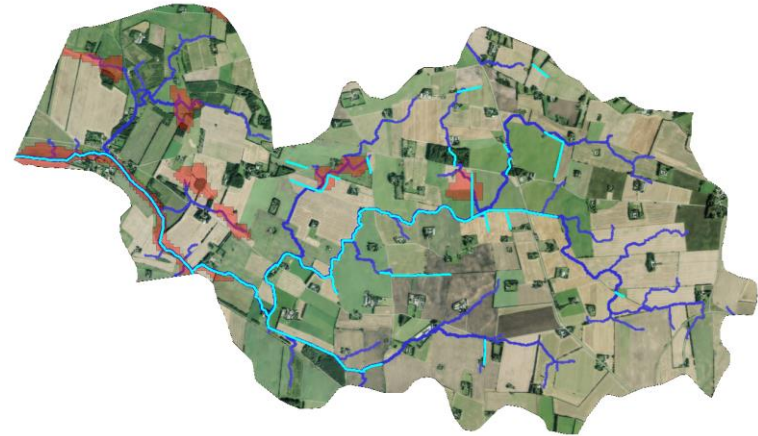


STØTTET AF  
**Promille**afgiftsfonden for landbrug

# Farmers knowledge

About:

- The area
- Water and drain pipes
- Landscape
- History
- Farming practices



# Farmers in the meeting



EUROPEAN UNION  
EUROPEAN  
REGIONAL  
DEVELOPMENT  
FUND



WITH FINANCIAL  
SUPPORT OF THE  
RUSSIAN  
FEDERATION

- Discussions about environmental „stuff“
- Testing ideas – do I get acknowledgement from my colleagues?
- They get a new social group – can be reactivated
- The group can go into dialogue with the municipality



# Why does it work?



EUROPEAN UNION  
EUROPEAN  
REGIONAL  
DEVELOPMENT  
FUND



WITH FINANCIAL  
SUPPORT OF THE  
RUSSIAN  
FEDERATION

Rational decisions can be found, but...

Acknowledgement from fellow farmers motivates for action.

A cause in a rational decision can be changed

Acknowledgement from colleagues is persistent and commits to the community

# World upside down



EUROPEAN UNION  
EUROPEAN  
REGIONAL  
DEVELOPMENT  
FUND



WITH FINANCIAL  
SUPPORT OF THE  
RUSSIAN  
FEDERATION

Human beings make decisions - afterwards we might find a cause to the decision.

A: to see people as rational entities

B: to meet people as social entities

A: Information and scientific knowledge => rational decision

B: Acknowledgement from friends motivates for action

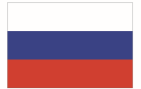
A: We introduce farmers for ready-made solutions => farmers say YES! (?)

B: We and farmers combine knowledge in a collective acknowledging process => we all motivate each other.

# Behind the scenes



EUROPEAN UNION  
EUROPEAN  
REGIONAL  
DEVELOPMENT  
FUND



WITH FINANCIAL  
SUPPORT OF THE  
RUSSIAN  
FEDERATION

## Knowledge collaboration on local level

Political level:

Farmers Union representant and Manager from municipality

Technical level:

Farm advisor/catchment officer and employees from municipality

To maintain confidence on all levels and ensure common knowledge base between stakeholders.

# Conclusions



EUROPEAN UNION  
EUROPEAN  
REGIONAL  
DEVELOPMENT  
FUND



WITH FINANCIAL  
SUPPORT OF THE  
RUSSIAN  
FEDERATION

Farmers are social creatures – acknowledgment from colleagues motivates

Knowledge from all local stakeholders introduced equally in the development local of solutions leads to trust and commitment

Future cost-effective implementation of water-environmental measures can profit from a broader concept of knowledge – the local knowledge might be more valuable than scientific knowledge